

E Photographic History of Hazard Events

The **2014 Hazard Mitigation Plan** collected a multitude of historical photos of disasters, weather events and local hazard events from years past, some of which were carried forward from the original **2008 Plan**. Although not referenced in the **2019 Plan**, Sutton's photographic history should be a memorable record of the tumultuous history the Town has had with natural disasters. When disasters were declared, their number designations are provided (*DR-xxxx*).

Photographs of Sutton Disasters and Hazard Events

The 1930s

1936 March: Flood

1938 September: Hurricane

The 1970s

1975 Circa: Ice Jam

The 2000s

2008 December: Ice Storm (*DR-1812*)

2009 June: Structure Fire

The 2010s

2013 March: Icy Roads I-89 Crash

2014 August: Severe Rainstorms and Flooding

2014 October: NH 114 Crash

2017 March: Severe Winter Storm I-89 Crash

2015-2019: Earthquakes in Central NH Region ≥ 2.0 Magnitude

2018 February: Severe Storms and Flooding

2018 November: Interstate 89 Southbound Crash in Sutton

2018 November: Snow Storm

2018 November: Early Winter Conditions I-89 Crash

2018 December: Icy Conditions I-89 Crash

2019 April: Icy Conditions I-89 Crash

The 1930s

1936 March: Flood (Possibly)



2008 Hazard Mitigation Plan cover: Marked as September 1938, Bridge on Route 114 in South Sutton (possibly was from 1936 March Flood)

*Photo courtesy of
Sutton Historical
Society*

1938 September: Hurricane



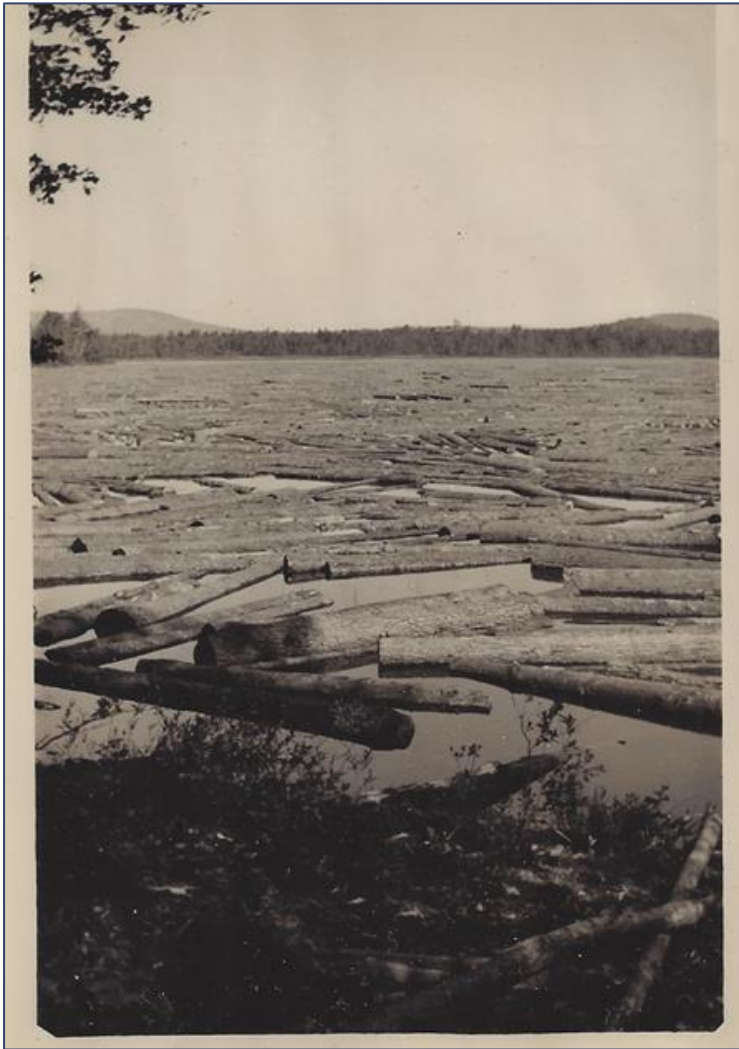
Route 114 North of Watkins Avenue, September 1938 Hurricane

Photos courtesy of Sutton Historical Society. Photos taken by Randolph "Chan" Blodgett, Jr.



Route 114 at Watkins Avenue, September 1938 Hurricane

1938 September: Hurricane



*Photo courtesy of
Sutton Historical
Society. Photo
taken by
Randolph "Chan"
Blodgett, Jr.*

Gile Pond, after September 1938 Hurricane

The 1970s

1975 Circa: Ice Jam



*Photo courtesy of
Sutton Historical
Society. Photo
excerpted from
History of Sutton,
New Hampshire,
Volume II, by
Jack Noon*

Blasting of Stevens Brook Ice Jam, around 1975

The 2000s

2008 December: Ice Storm (DR-1812)



2014 Hazard Mitigation Plan
cover: Sutton Police Cruiser, December 2008

Photos courtesy of Sutton Police Department



Tree Fall, December 2008

2008 December: Ice Storm (DR-1812)



*Photo courtesy of
Sutton Police
Department*

Sutton Police Cruiser under fallen tree debris, December 2008

2009 June: Structure Fire



Eaton Grange Road Fire, June 2009

*Photos courtesy
of Sutton Fire
Department*



Eaton Grange Road Fire, June 2009

The 2010s

2013 March: Icy Roads I-89 Crash



Icy roads contributed to a 65,000 gallon milk truck overturning and spilling of milk on I-89 in Sutton, March 7, 2013

*Photo courtesy of
WMUR online,
Sutton Fire &
Rescue Dept*

2014 August: Severe Rainstorms and Flooding



Severe road washouts on Dodge Hill Road during severe rainstorms, August 13, 2014



Photos courtesy of Donna Catanzaro

2014 October: NH 114 Crash



Small Kearsarge Regional School Bus crash (no children on board) crashes into tree on NH 114, Oct 24, 2014

*Photo courtesy of
Robert DeFelice,
Sutton Fire &
Rescue*

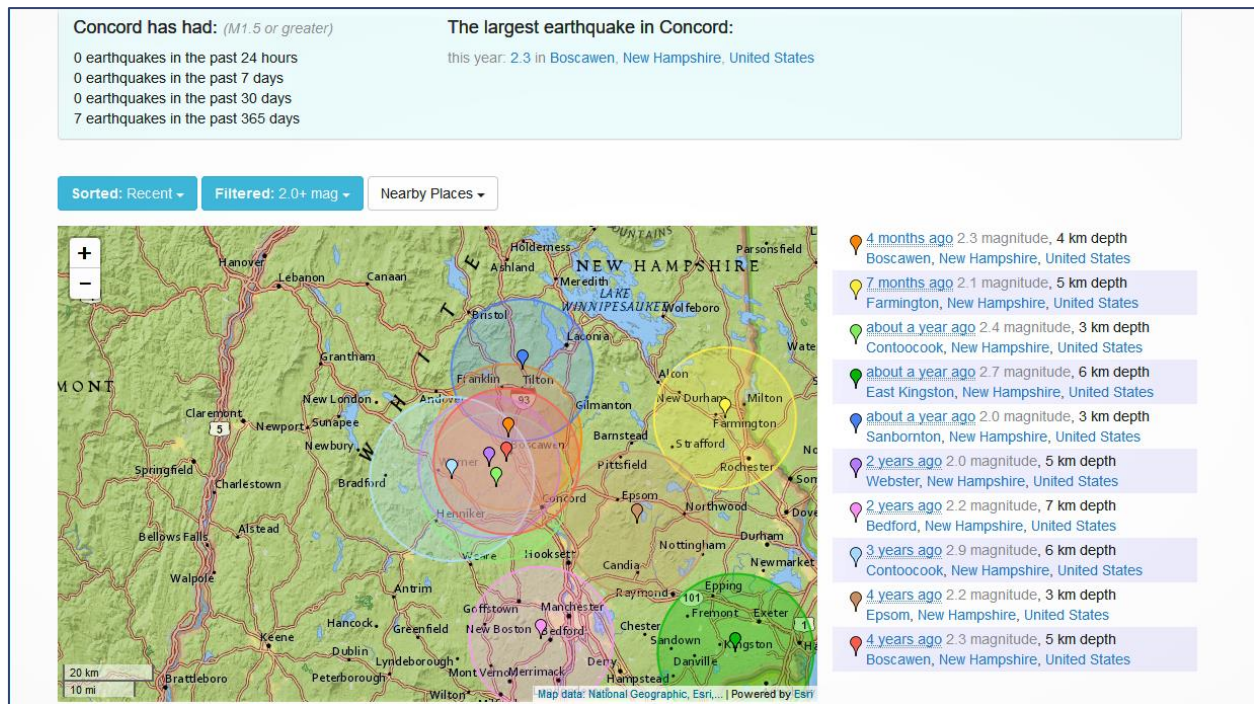
2017 March: Severe Winter Storm I-89 Crash



Warner Fire Department Engine Rollover on I-89 while responding to a Sutton call for assistance during March 12, 2017 Severe Winter Storm

*Photo courtesy of
Warner Fire
Department*

2015-2019: Earthquakes in Central NH Region >= 2.0 Magnitude



Central NH earthquakes 2.0M and greater, from 2015-2019, as of July 2019

Graphic from Earthquaketrack.com (USGS Data) accessed by CNHRPC, July 2019

2018 February: Severe Storms and Flooding



Kings Hill Road washout and erosion,
before junction with Poor Farm Road,
February 24, 2018



*Photos courtesy
of Jane
Williamson*

2018 November: Early Winter Conditions I-89 Crash



*Photos accessed
from WNTK
online, June 2019*

Interstate 89 Southbound Tractor Trailer Crash in Sutton during winter storm, November 18, 2018

2018 November: Early Severe Snow Storm



Snow storm accumulation and associated treefall on Blaisdell Hill Road, November 28, 2018

*Photo courtesy of
Marilou and
Bruno Steblai*

2018 December: Icy Conditions I-89 Crash



Interstate 89 passenger vehicle rollover crash in Sutton, December 7, 2018

*Photos accessed
from Eagle Times
online, June 2019*

2019 April: Icy Conditions I-89 Crash



*Photo accessed
from nh.gov
online, June 2019*

Interstate 89 southbound vehicle crash in Sutton, April 10, 2019

TOWN TO ADD MORE PHOTOS HERE: